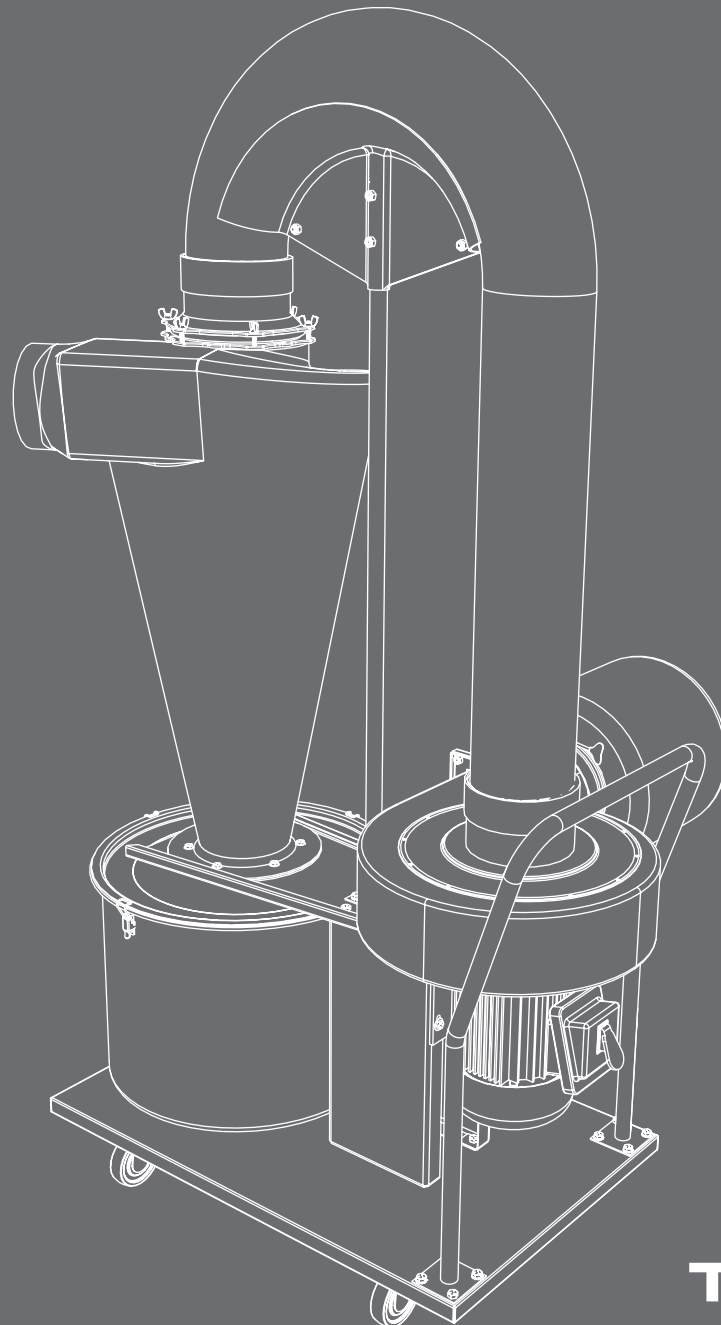


Trim Saver®

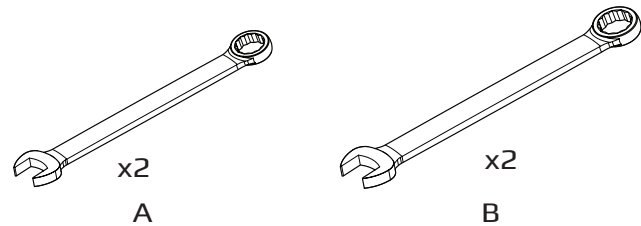
Assembly Instructions

CS-12 Manual

Version 2.3

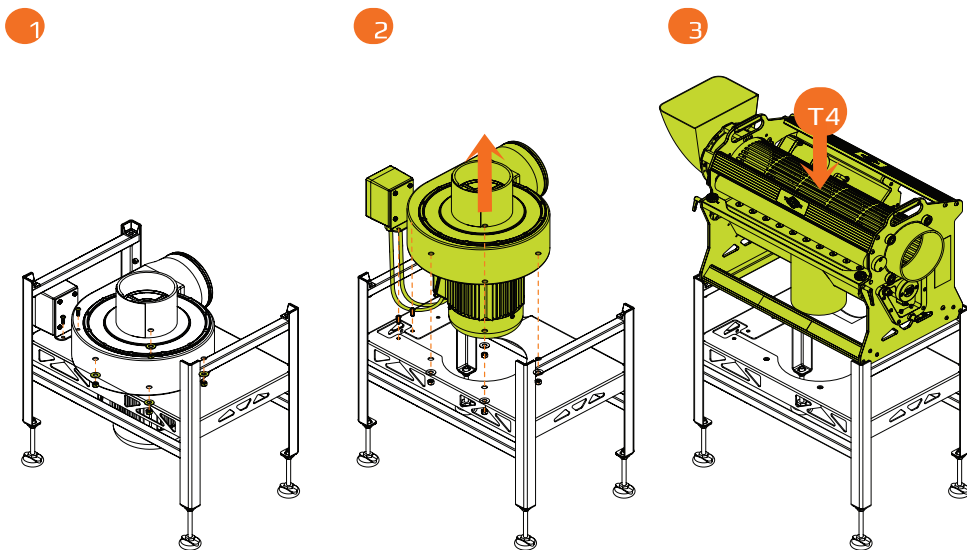


TOOLS NEEDED



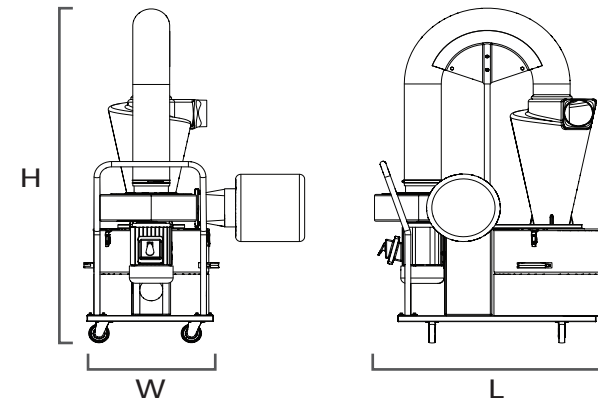
REF	DESCRIPTION	
A	7/16 Inch Wrench	2
B	1/2 Inch Wrench	2

TWISTER T4 LEAF TRIMMER VACUUM REMOVAL



1. Remove nuts and bolts from the underside of the vacuum and control box.
 2. Remove vacuum and control box.
 3. Place Twister T4 Leaf Trimmer on the Twister T4 Leaf Collector stand.
 4. Connect the separator to the T4 with collector hose.
- NOTE: Do not turn on the Separator without connecting to the T4.**

DIMENSIONS



	CS-12
Length	39in / 99cm
Width	22in / 55.8cm
Height	62in / 157.5cm

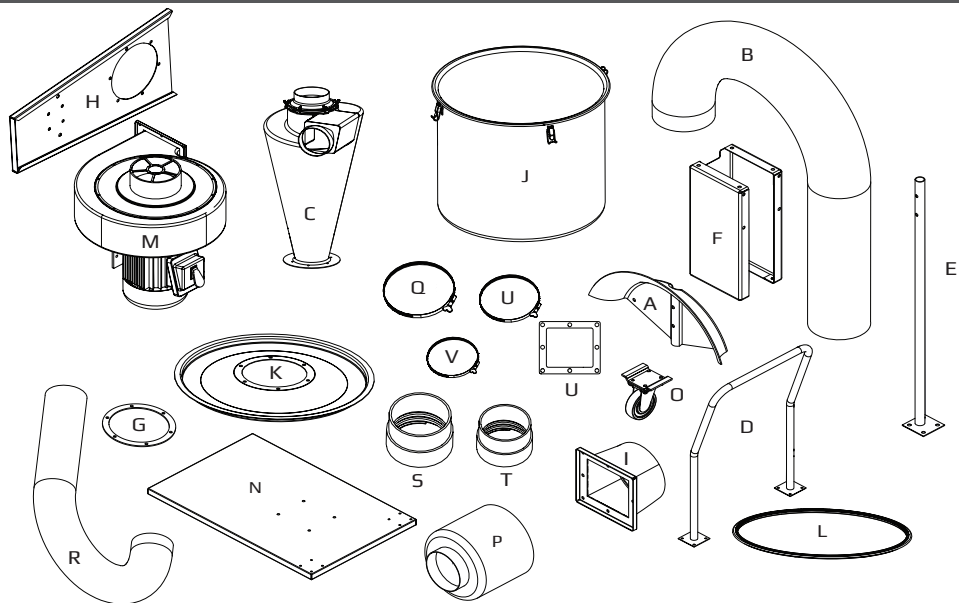
ELECTRICAL SPECIFICATION

	CS-12
Motor	1.5 HP
Input Voltage	120V
Amps (running)	15A
Amps (startup)	47A
Power Cord	AWG 12-3
Weight	155lbs/78kg
Airflow Capacity	1190 CFM
Static Pressure	6.45in of H2O
Impeller	10in / 25.4cm
Inlet	5in / 12.7cm

	CS-12
Connector (plug)	NEMA 5-15P

Additional Requirements	
Extension Cord	12-3 AWG (minimum AWG size) 15m / 50ft max Length

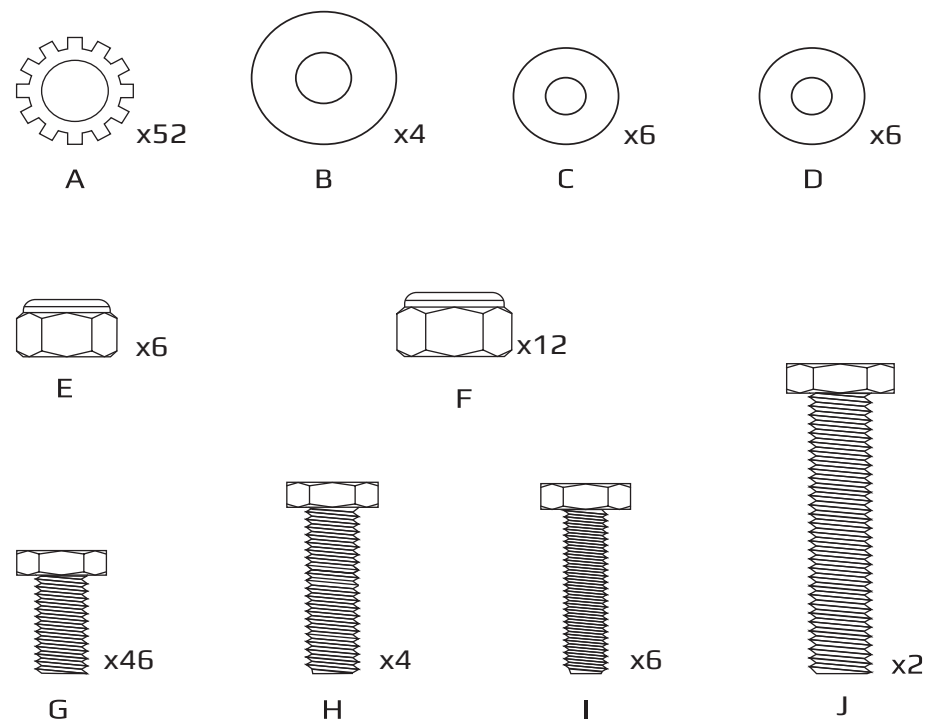
COMPONENT PARTS



REF	PART NO	DESCRIPTION	QTY
A	23-0198-00	HOSE SADDLE	2
B	23-0199-00	6 INCH HOSE	1
C	23-0202-00	VACUUM SEPARATOR	1
D	23-0204-00	CART HANDLE	1
E	23-0205-00	SADDLE SUPPORT CS-12	1
F	23-0206-00	MOTOR SUPPORT	1
G	23-0241-00	SEPARATOR GASKET	2
H	23-0208-00	LID HOLDER	1
I	23-0209-00	FILTER ADAPTER	1
J	23-0242-00	STAINLESS BIN	1
K	23-0243-00	STAINLESS BIN LID	1
L	23-0244-00	STAINLESS BIN LID GASKET	1
M	23-0213-00	1.5HP VACUUM MOTOR	1
N	23-0215-00	BASE PLATE	1
O	23-0146-00	CASTER	4
P	23-0217-00	FILTER BAG	1
Q	23-0218-00	FILTER CLAMP	1
R	23-01-127675	5 INCH HOSE	1
S	23-0132-00	HOSE CUFF, 6 INCH	2
T	23-01-002127	HOSE CUFF, 5 INCH	2
U	23-01-001152	HOSE CLAMP, 6 INCH	2
V	23-01-001127	HOSE CLAMP, 5 INCH	2

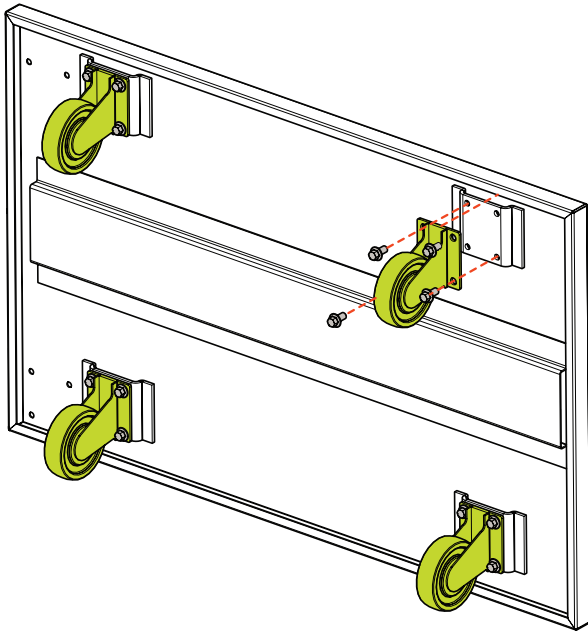
FASTENERS



KEEP FASTENERS IN LABELLED BAGS, ASSEMBLY INSTRUCTIONS DESCRIBE WHERE EACH PACKAGE IS USED.



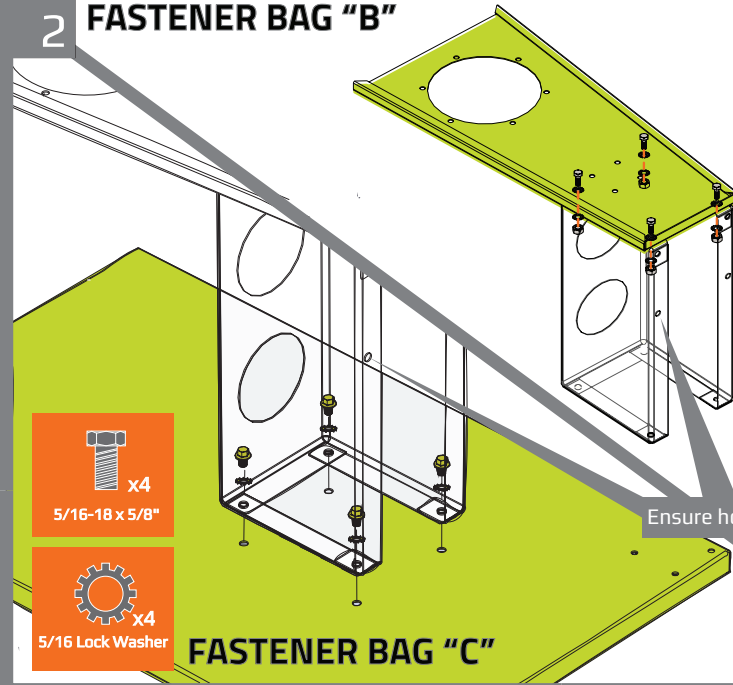
REF	PART NO	DESCRIPTION	QTY
A	13-02-000411	5/16 Lock Washer	52
B	13-0018-00	5/16 Flat Washer	4
C	13-02-000014	1/4 Flat Washer	6
D	23-0248-00	1/4 Silicone Washer	6
E	13-0062-00	1/4-20 Nut	6
F	13-0064-00	5/16-18 Nyloc Nut	12
G	13-08-516158	5/16-18 x 5/8" Hex Head Bolt	46
H	13-08-516110	5/16-18 x 1" Hex Head Bolt	4
I	13-08-142110	1/4-20 x 1" Hex Head Bolt	6
J	13-08-516115	5/16-18 x 1.5" Hex Head Bolt	2



1 FASTENER BAG "A"






-  x16
5/16-18 x 5/8"
-  x16
5/16 Star Lock Washer

2 FASTENER BAG "B"



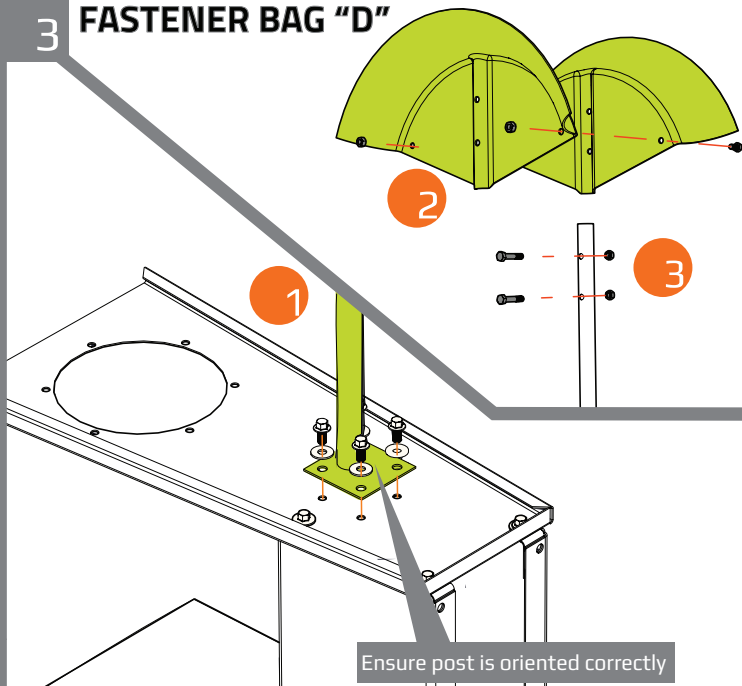
-  x4
5/16-18 x 5/8"
-  x4
5/16 Lock Washer

-  x4
5/16-18 x 5/8"
-  x8
5/16 Star Lock Washer
-  x4
5/16 Nylloc Nut

Ensure holes are on this side

FASTENER BAG "C"

3 FASTENER BAG "D"








-  x2
5/16-18 x 5/8"
-  x2
5/16-1.5" Bolt
-  x4
5/16 Nylloc Nut
-  x4
5/16-18 x 5/8"
-  x4
5/16 Lock Washer

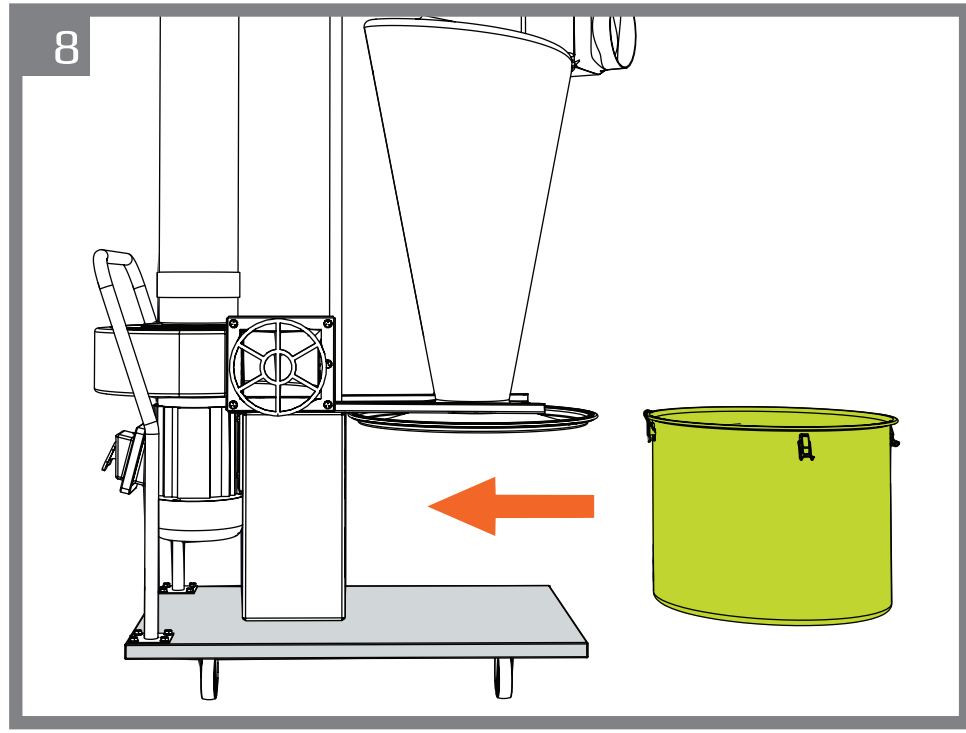
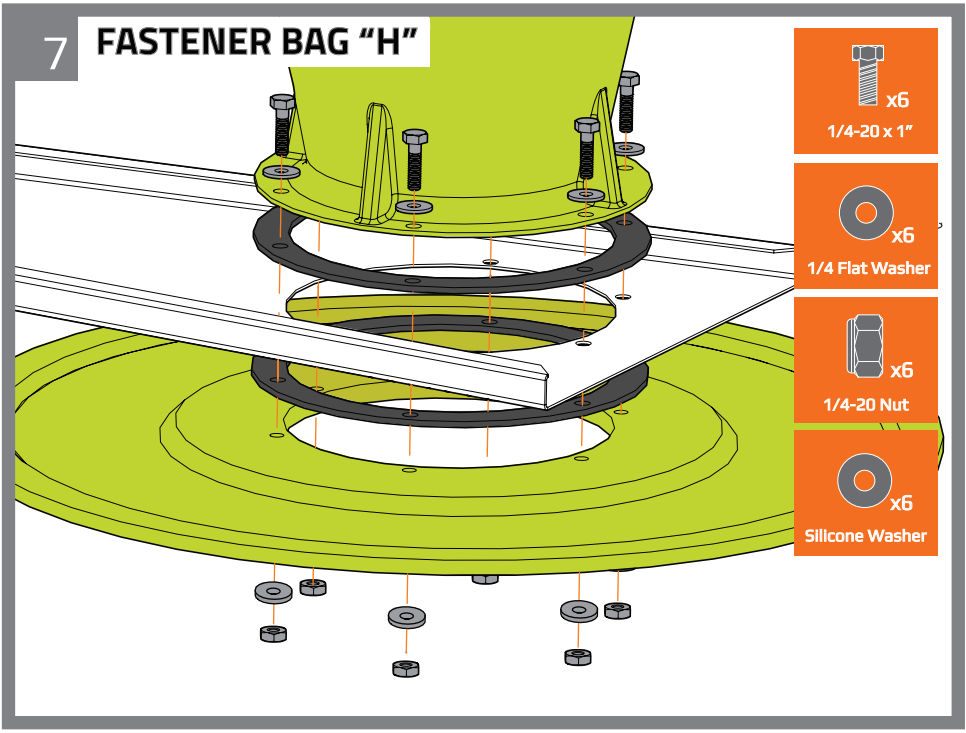
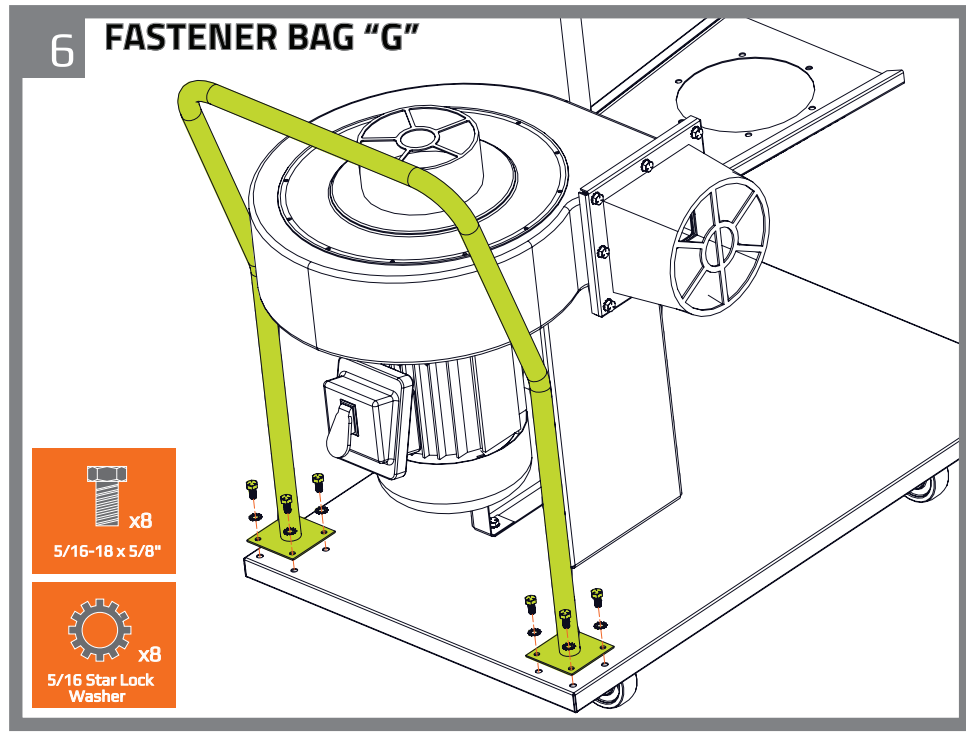
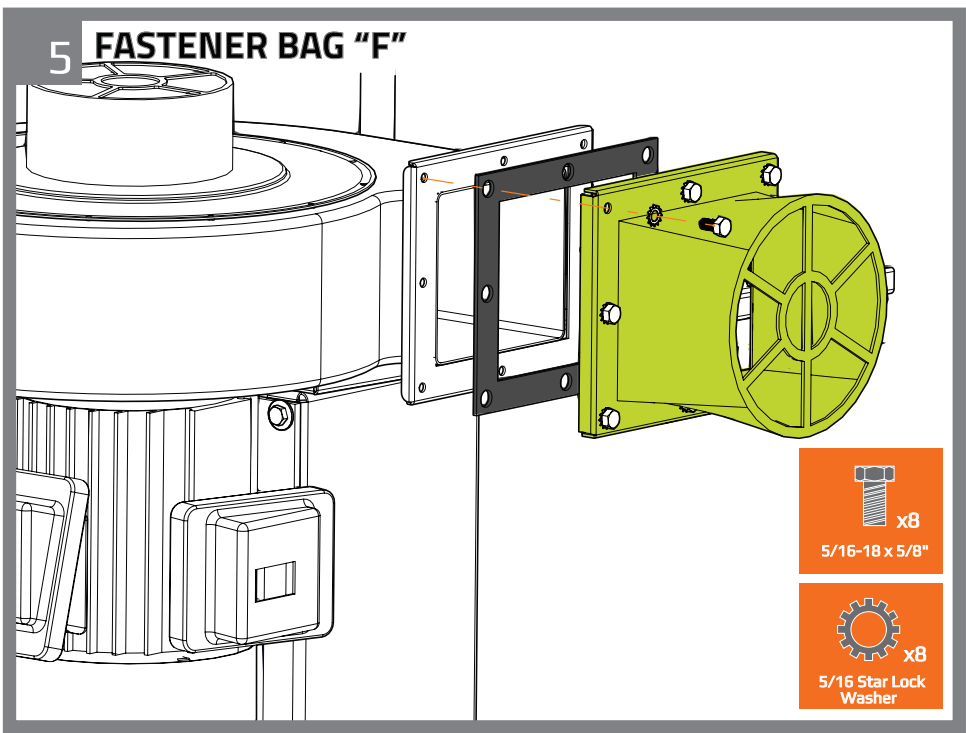
Ensure post is oriented correctly

4 FASTENER BAG "E"

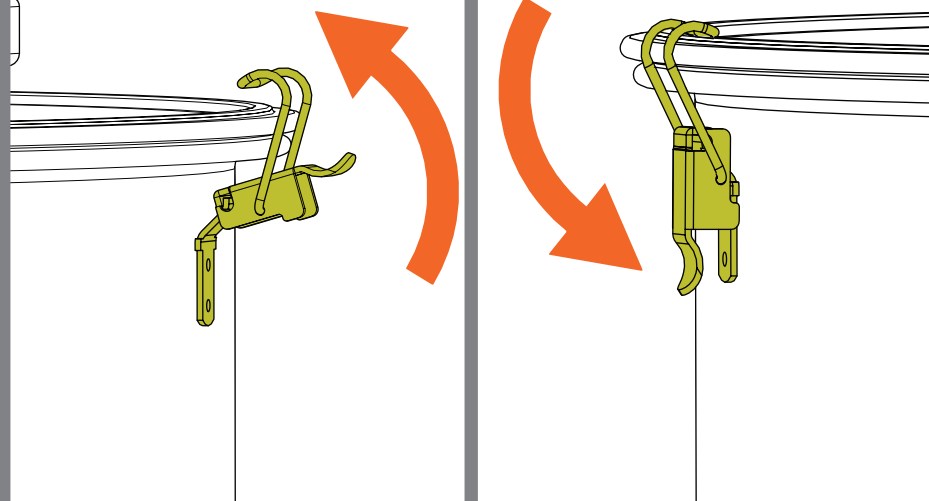


-  x1
Foam Block
-  x4
5/16 Nylloc Nut
-  x4
5/16 Flat Washer
-  x4
5/16 Flat Washer
-  x4
5/16-18 x 1"

FLIP 90°

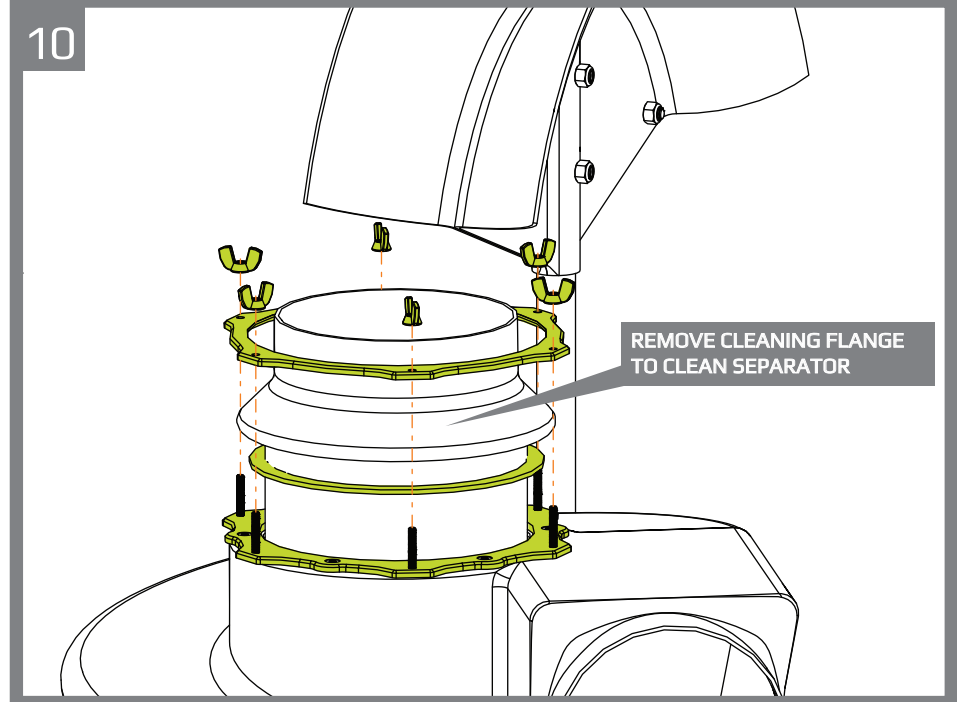


9

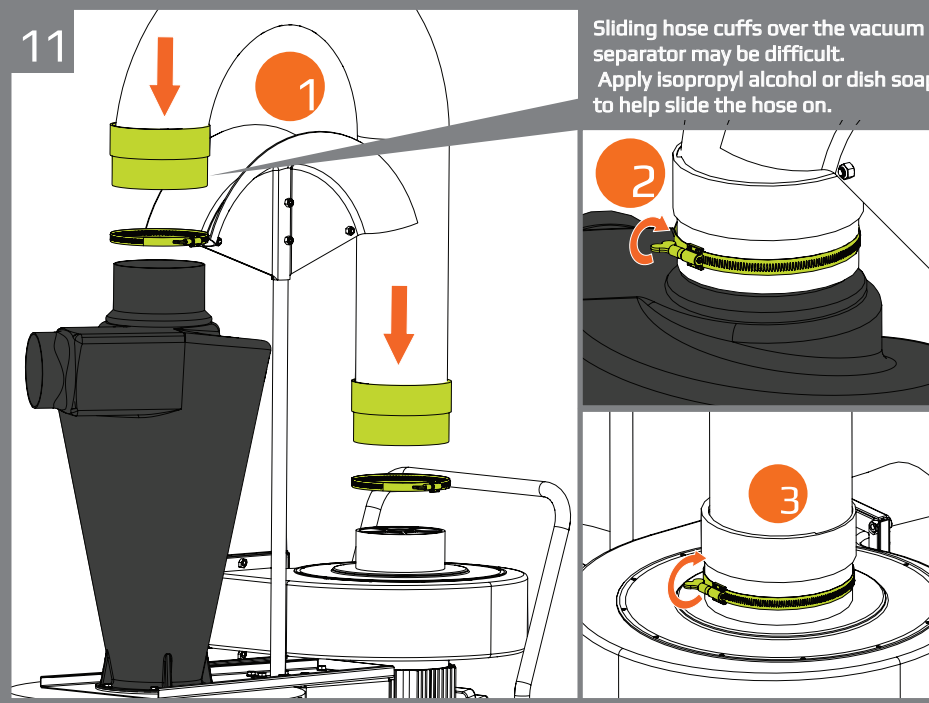


ENSURE THE BIN LID GASKET IS PROPERLY SEATED ON THE LID, AND FLUSH TO THE TOP OF THE BIN AFTER ALL LATCHES ARE ENGAGED.

10

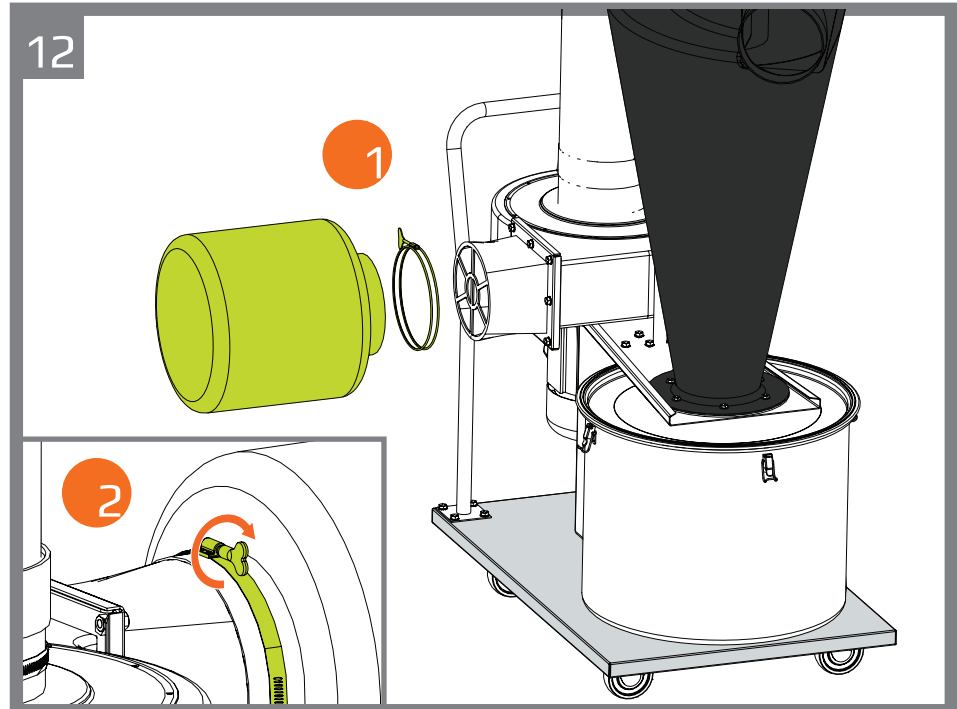


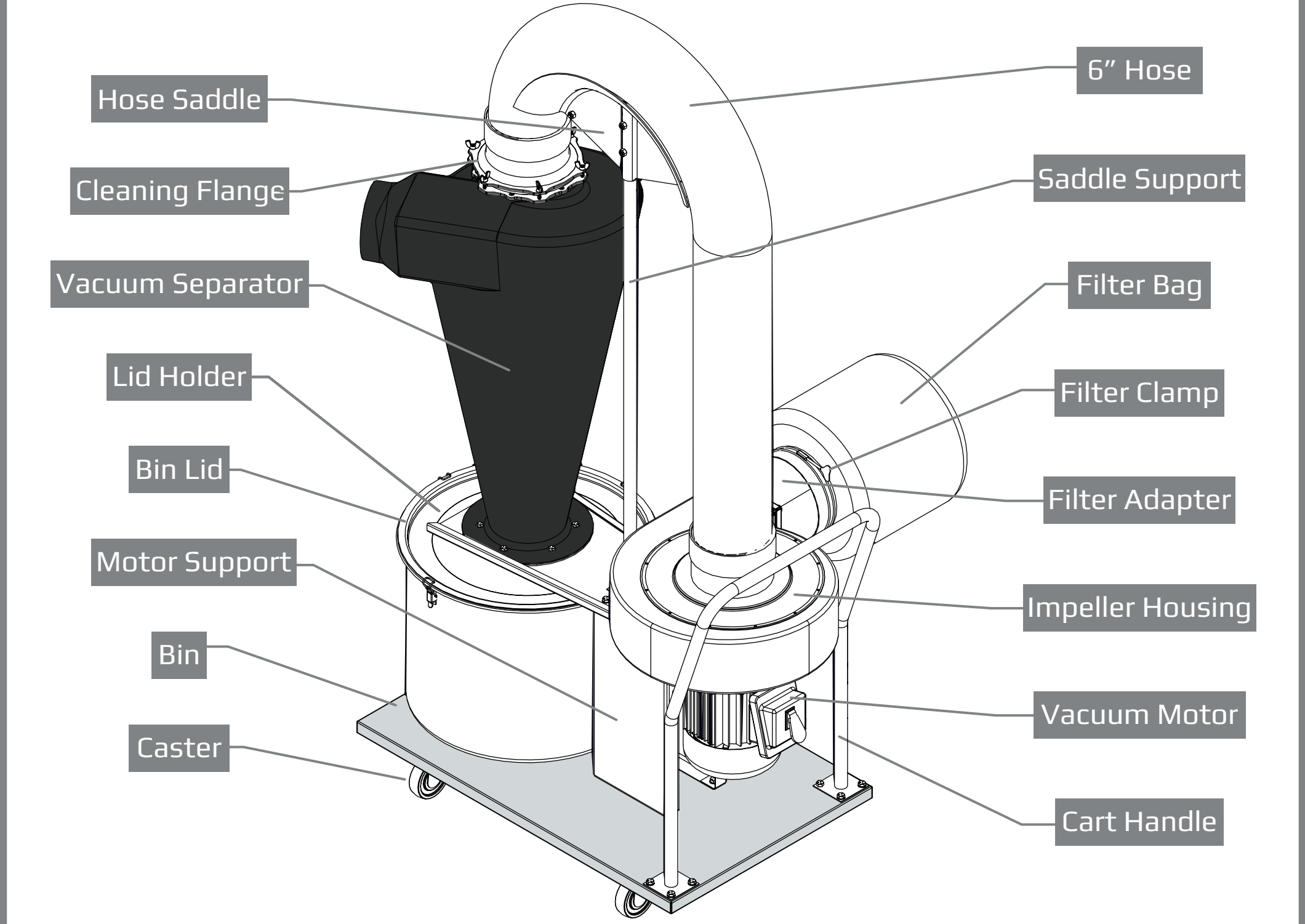
11



Sliding hose cuffs over the vacuum separator may be difficult. Apply isopropyl alcohol or dish soap to help slide the hose on.

12





Hose Saddle

6" Hose

Cleaning Flange

Saddle Support

Vacuum Separator

Filter Bag

Lid Holder

Filter Clamp

Bin Lid

Filter Adapter

Motor Support

Impeller Housing

Bin

Vacuum Motor

Caster

Cart Handle

