

TWISTER T6 TRIMMER



1 Year
STANDARD
WARRANTY



Scale Up
LINK AND ADD UNITS,
BASED ON YOUR
HARVEST VOLUME



Continuous Flow
and Runtime



Tech Support
OPEN 12 HOURS DAILY
7 DAYS A WEEK

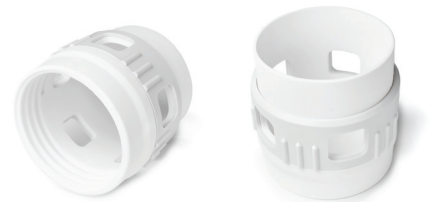
HIGH PERFORMANCE, SMALL PACKAGE

The Twister T6 is designed and engineered with the highest grade materials available, including high-performance ballistic-grade plastics, high-grade anodized alloy aluminum, and 304 stainless steel used throughout. The result is quite possibly the highest grade, most durable, easiest to use, easiest to clean, small-capacity trimmers ever made!



T6 AIRFLOW CONTROL

An ideal accessory for users who trim dry or low-density wet flower.



RUN INLINE TO SCALE

No. of T6's	Type	Feed (lbs/hr)	Feed (kg/hr)
1	Wet	7	3
2	Wet	18	8
1	Dry	2	1
2	Dry	5	2

T6 TRIMMER SPECS

SINGLE MACHINE - (INCLUDING VACUUM & STANDARD TUMBLER 1/4")

Input Voltage:	115V
Current (Amps):	2A
Blade Motor:	200 W/0.25 HP
Weight:	42 lbs/19 kg
Length:	30 in/76.2 cm
Width:	11 in/27.9 cm
Height:	10 in/25.4 cm
Curcuit Breaker Required:	15A/120V



Version 6.3.19